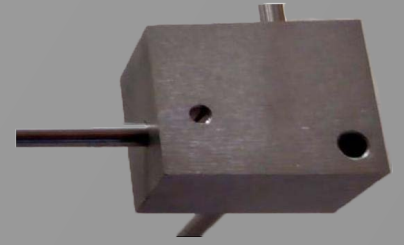


**CERAMATERIALS**



*"Your One Stop Shop for Thermal Processing"*

## **Moly Thermocouple Survey Racks**

- Universal design to easily & cheaply adapt to all size furnaces
- Assembly Set = 8 Corners+1 Center Blocks + 10 rods
- Size adapts by changing only the Molyrods (inexpensive)
- Fast & easy assembly & disassembly
- Easy & efficient storage disassembled
- Thermocouple well holes in each corner & centerblocks

### Ordering

- Define Length and Width of Hot Zone
- #of sets needed

